

**How To make a USB
modification / connection
for GPS side on a
W7TD / TID 7501HD
Without breaking any
factory sealing**



USB Modification on a TID 7501HD / W7TD

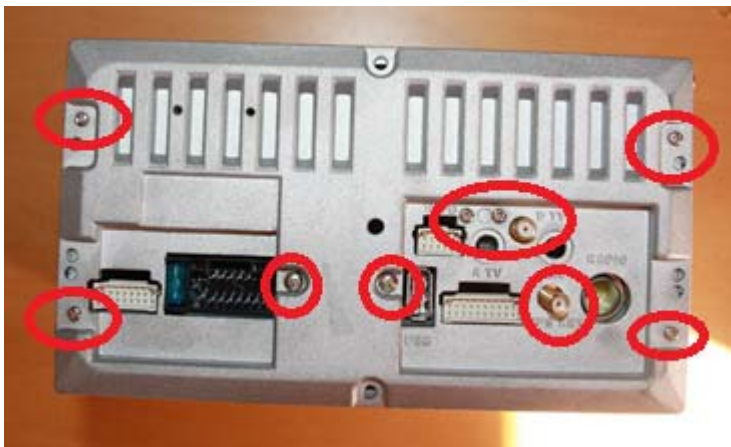
1. Remove the 4 screws on the front panel as indicated.



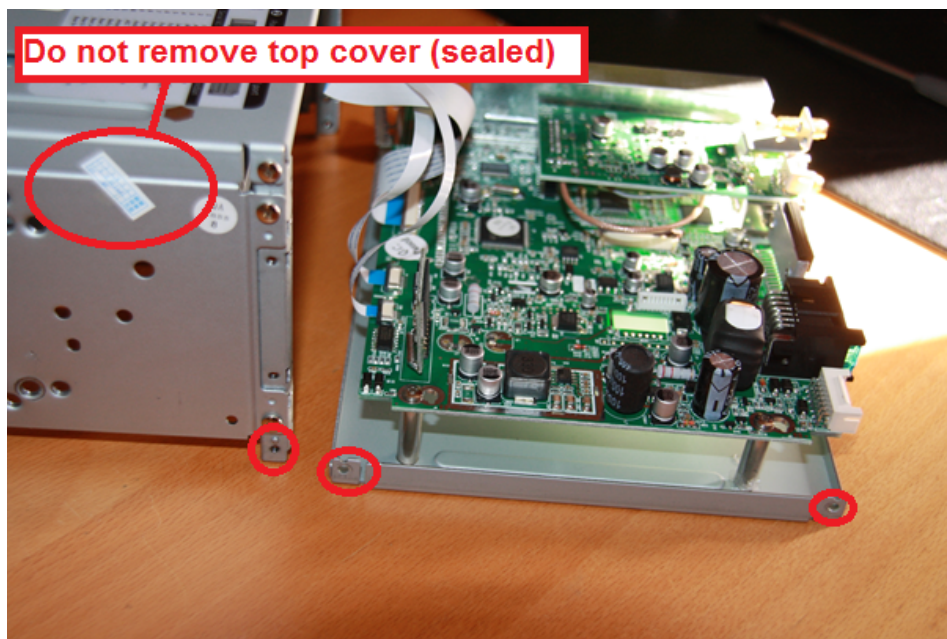
2. Now remove the 4 screws as indicated and remove front metal panel



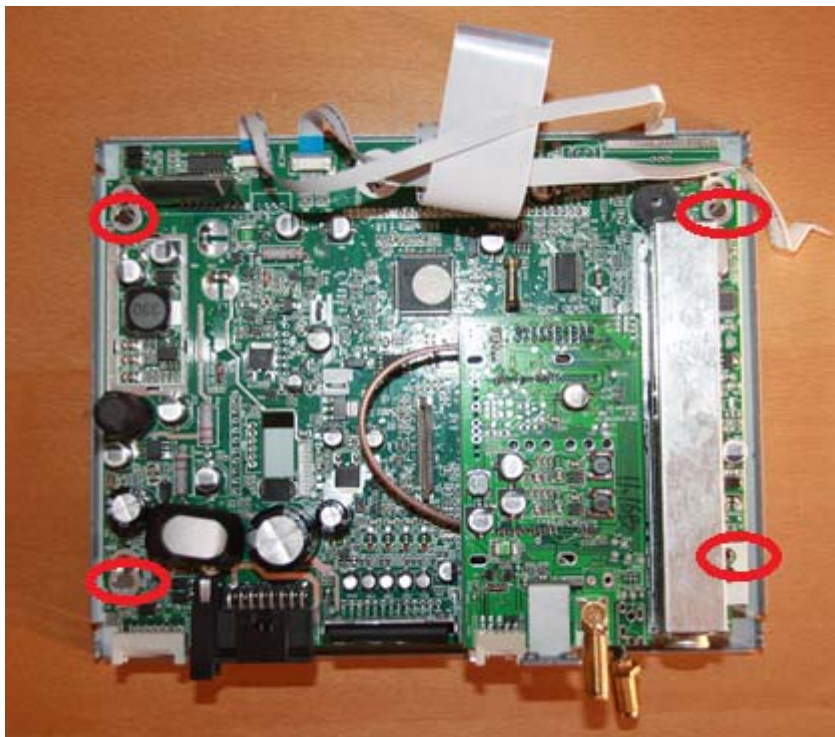
3. Remove also back metal panel



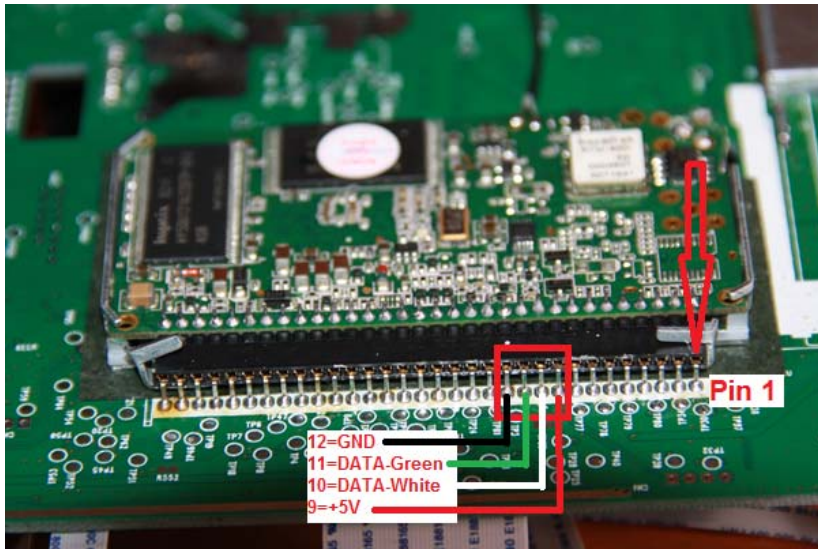
4. Unscrew bottom panel (top panel has sealing).



5. Disconnect the 2 flat cables from DVD, now you can Remove also the 4 screws of the PCB



6. On NOWADA PCB is pin 9 to 12 the GPS-side (WinCe) a USB connection



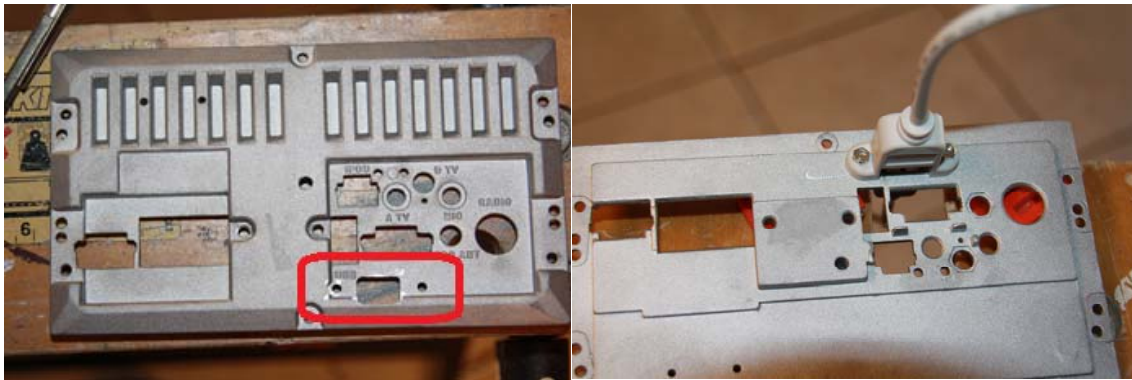
7. Remove the PCB for a safe working possibility



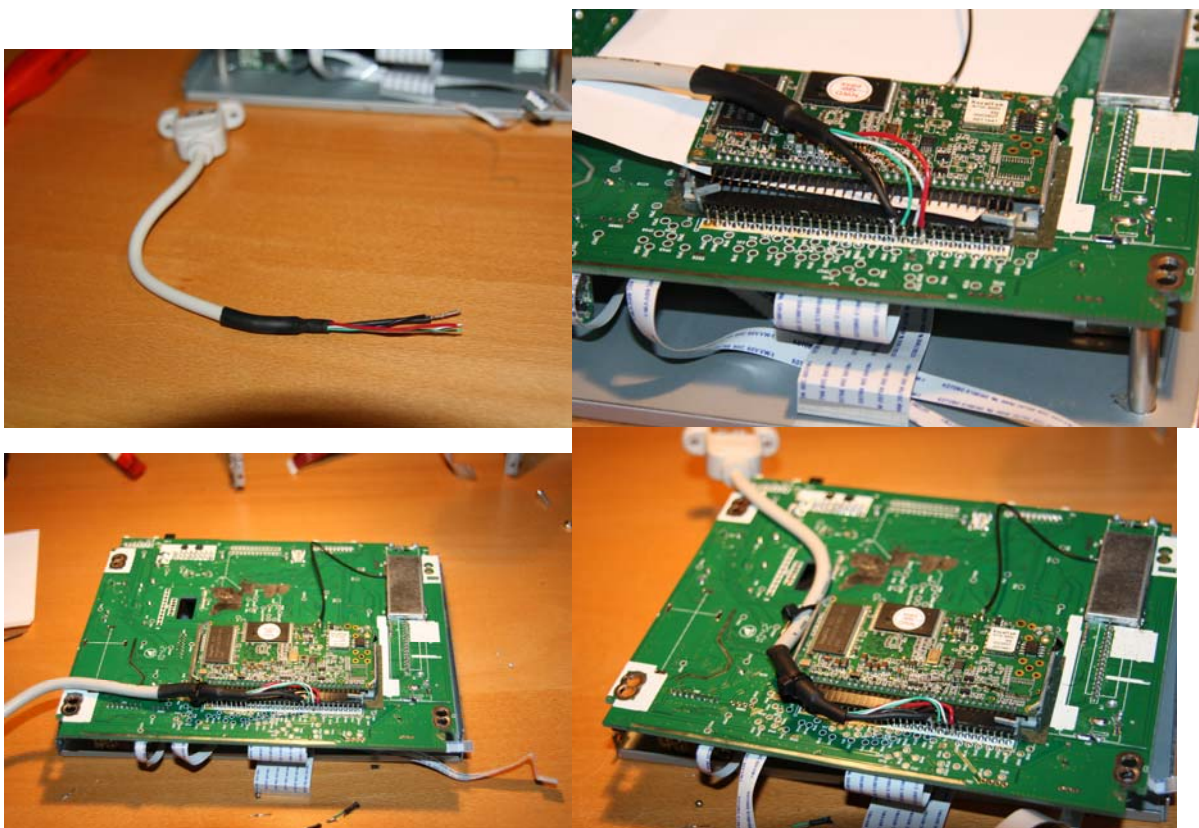
8. I used a old computer connector for my modification (3th I made already)



9. Take the back-side to a working place away from any PCB



10. Solder the USB lead to the PCB board or connector



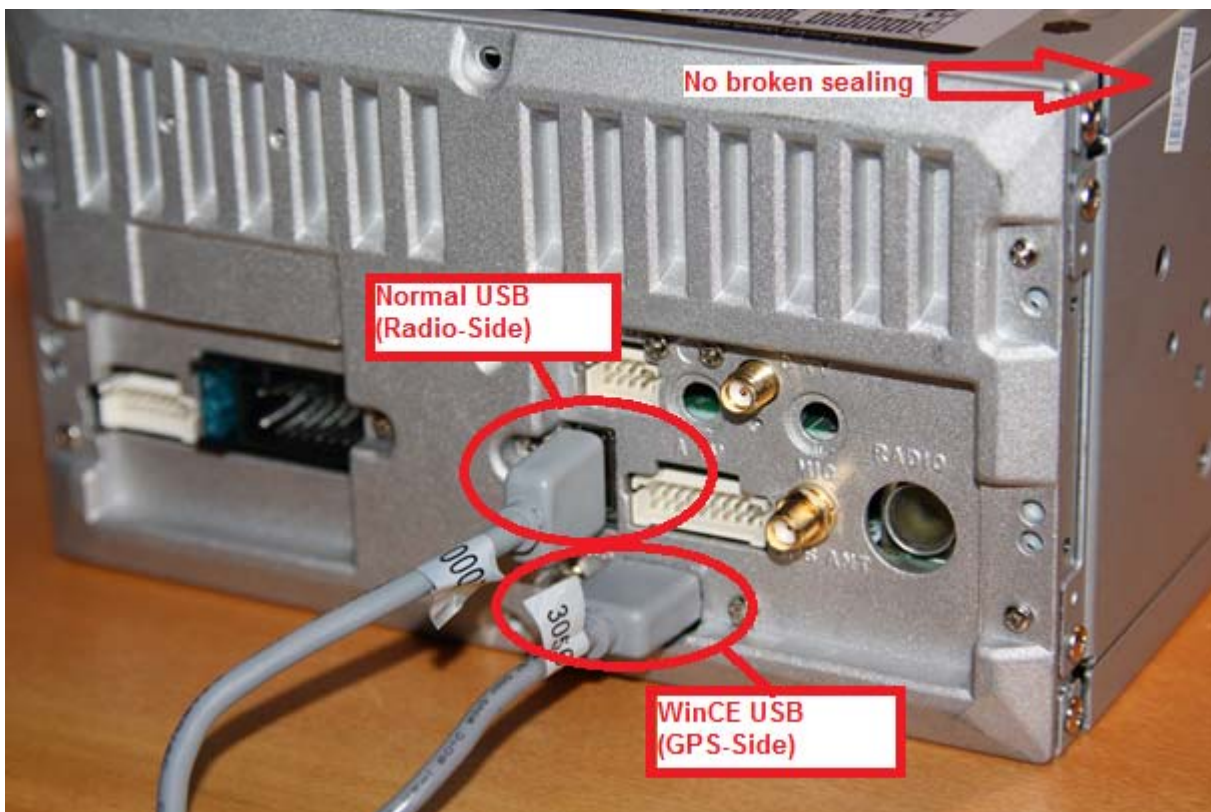
11. Make a solid connection by use hobby-glue.



12. Close in opposite direction.



13. End result.



Modification made by Rody@2012

mro_1970@hotmail.com